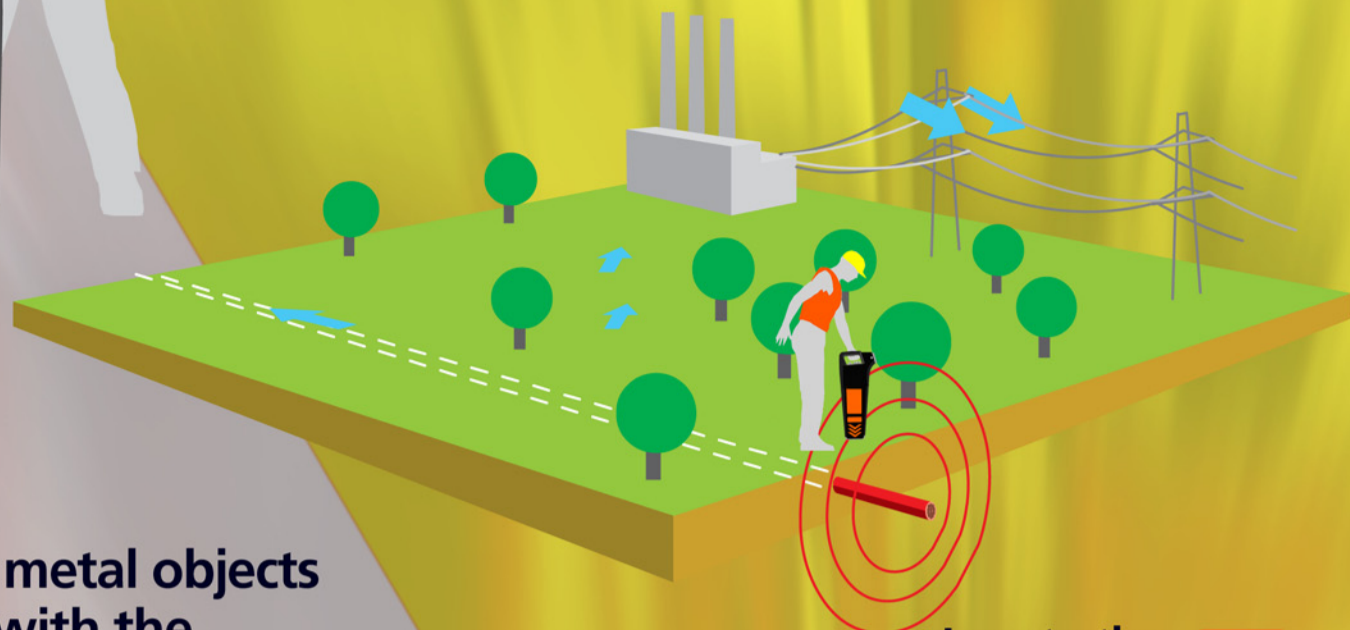


C.SCOPE

Cable Avoidance Tools



Find metal objects fast with the C.Scope CS880 cover locator

The CS880 is a low cost solution to the problem of finding lost or hidden metal objects in the ground. Typical targets will be manhole covers and stopcock boxes covered by tarmac or earth, steel reinforcement rods in concrete road surfaces, metal pipes, valve heads, and buried fuel tanks. The C.Scope designed Induction Balance operating system provides maximum sensitivity to solid metal objects whilst ignoring the small metal clutter which causes false signals in cheap inferior metal detectors. A 'target-hold' facility enables the operator to trace out the shape and size of the located object - less time wasted uncovering the wrong target!



Training courses are available to enable operatives to get the most from the equipment. A detailed operator tutorial can be supplied on CD-ROM

Locate the position of power cables using the Cable Avoidance Tool in Power mode

P

Locate a wide range of conductors, whether or not they are carrying current, using the Cable Avoidance Tool in Radio Mode

R

Plastic Pipe Tracer

Use traceable rod connected to a Signal Generator to send a signal along a non-metallic pipe. 25 or 50 m.

The C.Scope Plastic Pipe Tracer is an economical solution to the problem of tracing routes of nonmetallic pipes and conduits. The unique design is flexible, highly robust and yet very small in diameter. Working in conjunction with a C.Scope Signal Generator, the Plastic Pipe Tracer is inserted into the pipe and a signal is sent either along the full length or just to the tip. The signal is traced using a C.Scope Cable Avoidance Tool operating in the 'Generator' mode.

Insert Tracer into open end of pipe



Use a transmitting Sonde to propel along a pipe - tracking its progress using the C.Scope Cable Avoidance Tool

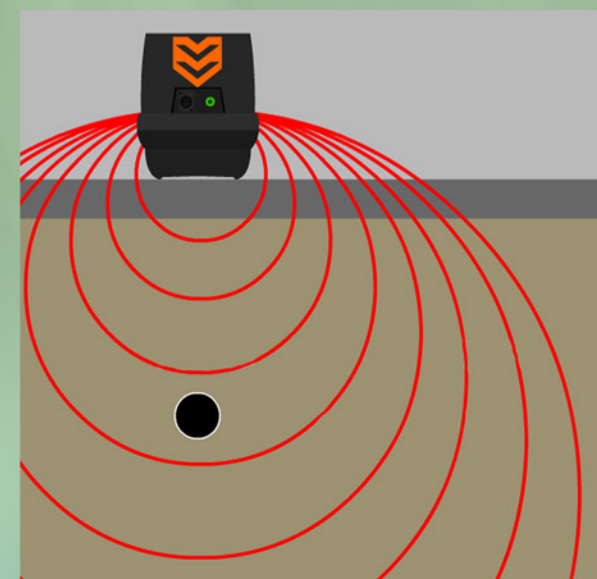


Connect the signal to a service using the Signal Clamp or Mains Signal Injector

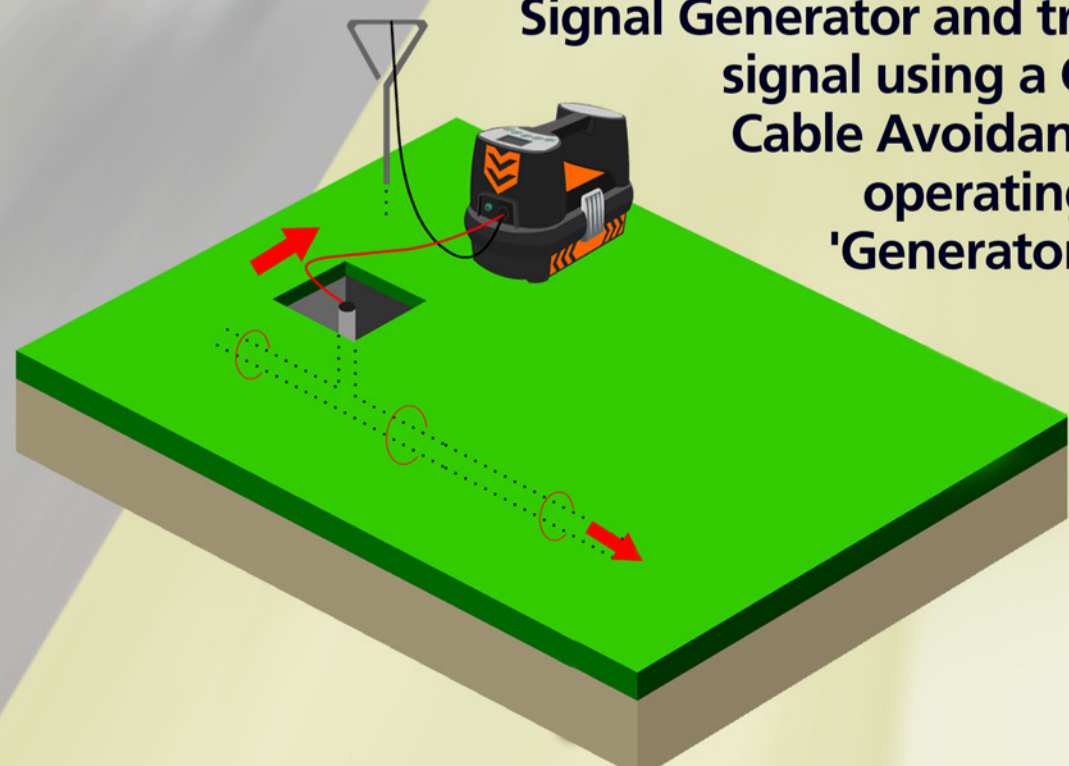
G



Couple the signal to a line by induction



Trace the route of specific services by connecting a C.Scope Signal Generator and trace the signal using a C.Scope Cable Avoidance Tool operating in the 'Generator' mode.



USE C.SCOPE LOCATORS BEFORE AND DURING EXCAVATION ACCORDING TO HSE GUIDELINES